

Inside

- 2** New Six-to-Fix Sites Revealed
Plus Details about Each Project
- 3** Fundraising for Ellicott City
Update on State Funding
Heritage Fund Highlights
The Bel-Loc Diner
- 4** Drone Scans of Whites Hall
Upcoming Events

THE Phoenix

FALL 2016
VOL. 33 · NO. 4

PUBLISHED · QUARTERLY · FOR · MEMBERS · OF · PRESERVATION · MARYLAND
DEDICATED TO PRESERVING MARYLAND'S HISTORIC BUILDINGS, NEIGHBORHOODS, LANDSCAPES, AND ARCHAEOLOGICAL SITES THROUGH OUTREACH, FUNDING, AND ADVOCACY

FROM THE DESK OF NICHOLAS A. REDDING

Lifting Others

"We rise by lifting others." So noted famed orator Robert Ingersoll many years ago. It's a message that has resonated here at Preservation Maryland in the many weeks we've spent assisting and lifting our fellow Marylanders in Ellicott City—a historic town caught in the crosshairs of a devastating flash flood on a sultry July evening this summer.

OUR ONGOING technical assistance work in Ellicott City has allowed us to utilize our strengths—our understanding of historic buildings—to help those impacted to rise and recover. We, as an organization, have risen as a result and are stronger because of this experience.



Nicholas A. Redding
EXECUTIVE DIRECTOR

It has also been one of the greatest financial and logistical challenges this organization has ever accepted. Fortunately, we've had tremendous support. We are indebted to the entire Maryland preservation community which came together under one banner and one mission: to help Ellicott City.

Finally, I want you to know that our initial, split-second decision to tackle this challenge was



made possible because funds from our Membership and Annual Fund campaign gave us the flexibility to do so. *If you are proud of Preservation Maryland's response and support this effort, I'd ask that you consider making a donation today to help us recover the tremendous expenses we have incurred as a result of this sustained operation and to give us the flexibility to respond to the next big challenge.*

Together, we are lifting others and saving the very Best of Maryland,

Nicholas Redding
Nicholas A. Redding • Executive Director



KEAST & HOOD AND THE STRUCTURAL GROUP provided expert emergency stabilization services to prevent the demolition of two of the oldest frame buildings in flood-damaged Ellicott City.

ELLICOTT CITY FLOOD RECOVERY AMONG NEW PROJECTS

New Six-to-Fix Projects Revealed at Annual Event

Intent on providing real solutions to big challenges, Preservation Maryland is poised for action.

WITH A VARIETY OF NEEDS—from hands-on clean-ups to disaster response to cultural landscape advocacy and complex building reuse and rehabilitation planning—they all require action.

The latest Six-to-Fix projects were revealed to a packed room on Thursday, October 13 at the Maryland Zoo's historic Mansion House. The event began with the introduction of Ellicott City and an in-depth explanation of the work already accomplished and the many projects which remain. A first-of-its-kind temporary Preservation Resource Center was established in Ellicott City in early September as a way of addressing the overwhelming need for boots-on-the-ground preservation technical assistance. From providing direct, emergency engineering in the days following the flood to long-term technical assistance to help navigate the complex rebuilding process, the Center has been an invaluable

addition to the overall Ellicott City recovery effort.

Moving beyond Ellicott City, attendees learned about the challenge of protecting Kent County's pristine Eastern Shore cultural landscapes from the despoiling impact of large-scale commercial wind and solar projects. It was made clear that preservationists recognize the need for clean power—but not at the expense of our heritage when countless other locations abound. In Baltimore City, Preservation Maryland will team up with CivicWorks in an effort to plan for reuse of the decommissioned Clifton Park Valve House. The circa 1887 structure—once thought lost and beyond repair—is now the focus of a broader effort to invest in the park. Preservation Maryland has been asked to help envision that effort.

In Frederick County, the organization will support the small Town of Burkittsville—population 151—in their desire to repurpose a long-vacant historic brick home that served as the headquarters for Union General William Franklin during the Battle of South Mountain in 1862. The goal is to tackle the project to help

bring more tourists to the tiny but immaculately preserved town. In St. Mary's County, Newtowne Manor, an 18th-century Jesuit rectory important to the early history of Catholicism in Maryland, will be the focus of a planning effort to repurpose and reuse the architecturally and cultural significant building and landscape. Finally, Preservation Maryland will work statewide to address the shared resource-specific needs of historic cemeteries and burial sites, and assist in creating and disseminating new resources to prevent the continuation of the cycle of neglect.

Turn the page for more about the new Six-to-Fix projects. Learn how you can be part of the fix. »

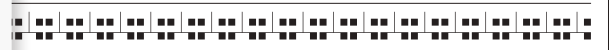
AT 8111-8113 MAIN STREET, Preservation Maryland's Ellicott City Recovery Fund made a quick response and emergency stabilization possible.



By the Numbers PRESERVATION FUNDING NEEDS IN MARYLAND

At the end of last Session, Maryland Historical Trust was charged by the General Assembly to assess the state of preservation and museum funding in each of their three grant programs: capital, non-capital, and museum.

- \$0** Total amount appropriated for the Trust's grant programs in FY17
- \$1 mil** Total amount available for bricks-and-mortar preservation at peak of capital program
- \$1.6 mil** Total amount available for survey and research at peak of non-capital grant program
- \$2.3 mil** Total funding for museum assistance program at its peak
- \$1.5 mil** Total amount Preservation Maryland will request of Governor Hogan for these programs in FY18

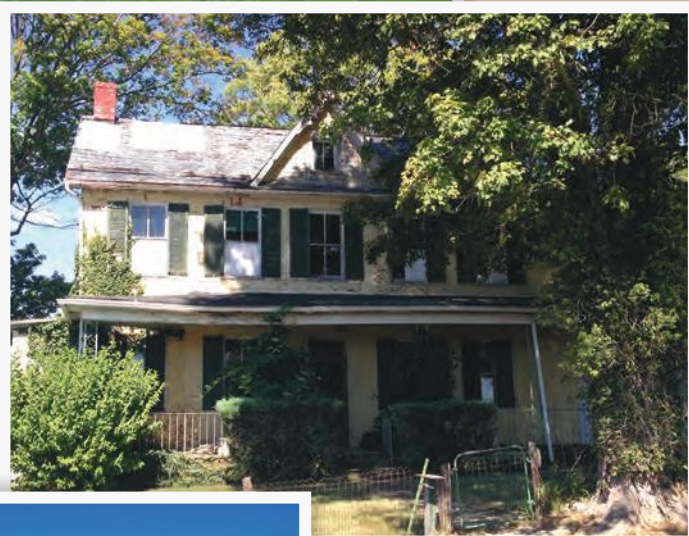
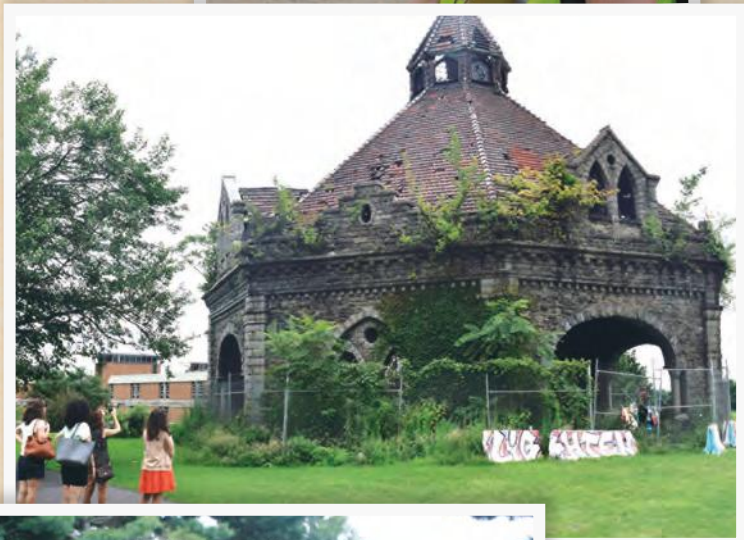


Diverse. Challenging. Complex. Rewarding.



In the coming year, Preservation Maryland will focus direct technical and financial assistance to the following projects and will orchestrate a growing network of expert volunteers, community input, and capacity building to affect real change, bringing these places back from the edge.

Find out more at sixtofix.org.



1 ELICOTT CITY FLOOD RECOVERY
Rising from the Waters: Rebuilding a City with Preservation in Mind

LOCATION ELICOTT CITY, HOWARD COUNTY
PARTNER PATAPSCO VALLEY HERITAGE GREENWAY AND HOWARD COUNTY GOVERNMENT
CHALLENGE This July, a flash flood inundated Ellicott City and ravaged its historic Main Street. Recovery efforts may be required for years to come. Retaining the history and character of the City is a critical component of its physical and economic recovery.
SOLUTION Preservation Maryland has established a Preservation Resource Center on Main Street to address both immediate and long-term historic preservation needs. We will also work with our partners to identify and implement flood mitigation solutions for the historic City.

2 THE VALVE HOUSE AT CLIFTON PARK
Back from the Edge: Pumping New Life into a Neglected Structure

LOCATION BALTIMORE CITY
PARTNERS CIVICWORKS
CHALLENGE Abandoned for over 50 years, Clifton Park's once-decorative hexagonal Valve House is deteriorating with crumbling mortar, overgrown vegetation, and rust in the clay tile support system threatening collapse of the roof.
SOLUTION Preservation Maryland will work to strengthen community support for the revitalization of the Valve House, to develop a list of potential uses for the building, and to assist CivicWorks in obtaining a long-term lease on the structure clearing a path towards purpose and reuse.

3 CULTURAL LANDSCAPES OF THE EASTERN SHORE
Wide Open Spaces: Safeguarding our Cultural Landscapes

LOCATION KENT COUNTY
PARTNERS KENT CONSERVATION AND PRESERVATION ALLIANCE
CHALLENGE Kent County is a picturesque rural community. New kinds of farms — wind and solar farms — could drastically alter the landscape. The necessity of clean energy is not in question, but it should not come at the cost of culture, heritage, and food security.
SOLUTION Preservation Maryland will work with our environmental and conservation partners to outline the threats to Maryland's landscape while offering alternative solutions and locations to produce clean energy. We will also work to urge the General Assembly to pass legislation to tighten zoning regulations.

4 THE HAMILTON WILLARD SHAFER FARM
Witness Protection: A New Purpose for a Civil War Site

LOCATION BURKITTSVILLE, FREDERICK COUNTY
PARTNER BURKITTSVILLE PRESERVATION ASSOCIATION
CHALLENGE The house, barn, and outbuilding at the Shafer Farm have long been vacant. Once the site of a Union headquarters during the 1862 Battle of South Mountain, this witness to the Civil War could be lost forever without immediate attention.
SOLUTION With the goal of linking the site to local heritage tourism, Preservation Maryland will provide technical assistance for structural stabilization, develop a long-term use and care strategy for the property, and assist with grant-writing, fundraising and public awareness.

5 NEWTOWNE MANOR RELIGIOUS COMPLEX
A Worthy Manor: Saving Part of Maryland's Religious History

LOCATION COMPTON, ST. MARY'S COUNTY
PARTNER FRIENDS OF NEWTOWNE MANOR HOUSE
CHALLENGE Long associated with the St. Francis Xavier Church and the Jesuit communities that once settled the area, 18th-century Newtowne Manor House has become the focus of a community group bent on saving the site. Decades of disuse have left it in disrepair and in need of attention.
SOLUTION Preservation Maryland will support our partners in the newly-established Friends of Newtowne Manor House by providing technical assistance in addressing physical needs, and organization support to develop programmatic strategies and reuse plan.

6 HISTORIC CEMETERIES OF MARYLAND
Rest for the Weary: Protecting Maryland's Historic Cemeteries

LOCATION STATEWIDE
PARTNER COALITION TO PROTECT MARYLAND BURIAL SITES
CHALLENGE Across the state, some of Maryland's most sacred sites are endangered by environmental factors, lack of clear ownership, and development pressure.
SOLUTION Working closely with the Coalition to Protect Maryland Burial Sites, Preservation Maryland will help call attention to the many cemeteries that are in disrepair, organizing volunteer clean-up days while also providing pro-active information to the greater community about historic cemetery maintenance and repair.

Photos (from top)—(1) Heather Barrett and Nancy Kurtz from the Maryland Historical Trust survey damage. (2) Preservation Maryland staff and interns at the Valve House in Baltimore City. (3) Save Our Homes sign from grassroots group Keep Kent Scenic seen in Kent County. (4) Elevation of the main house of the Shafer Farm in Burkittsville. (5) A group tours the 18th century Newtowne Manor in St. Mary's County. (6) Bush Creek Quaker Burial Ground in Frederick County.

Preservation Maryland Leadership

OVER 80 YEARS OF PROTECTING THE BEST OF MARYLAND
presmd.org

BOARD OF DIRECTORS

- Anthony Azola
PRESIDENT
- Tyler Tate, PE, LEED AP
VICE PRESIDENT
- Mary C. Gregory
VICE PRESIDENT
- Theresa T. Michel
SECRETARY
- Samuel K. Himmelrich, Jr.
TREASURER
- Thomas S. Spencer, Esq.
ASSISTANT TREASURER
- Diane L. Caslow
- Matthew J. Daw
- Amanda Fenstermaker
- Dale Glenwood Green,
AAIA, APT, LEED AP
- Richard E. Hall, AICP

- Nicholas G. Penniman, IV
Jeffrey A. Penza, AIA
John J. Petro
Ann P. Powell
Nakita Reed, AIA, LEED AP
BD+C, GGP

STAFF

- Meagan Baco
DIRECTOR OF COMMUNICATIONS
- Jana Carey
DIRECTOR OF OPERATIONS
- Eleanor Colmers
DIRECTOR OF ENGAGEMENT
- Margaret De Arcangelis
PRESERVATION SERVICES DIRECTOR
- Douglas A. Harbit
DIRECTOR OF DEVELOPMENT
- Renée Novak
ELLCOTT CITY FIELD DIRECTOR
- Nicholas A. Redding
EXECUTIVE DIRECTOR

DESIGNED & PRINTED IN BALTIMORE

GRAPHIC DESIGN: PJ BOGERT DESIGN
PRINTING: ADVANCE PRINTING

SUPPORT ELLICOTT CITY

On-the-Ground

AFTER THE TERRIBLE FLOODING in Ellicott City, Preservation Maryland's agility allowed the organization to quickly provide expertise and connections to prevent the demolition of structures and continue preservation recovery efforts with on-the-ground technical assistance.

WITH THE FUNDS raised immediately after the flood and with the support of Howard Bank and other community sponsors, Preservation Maryland has opened a staffed temporary field office on Main Street to provide direct technical preservation assistance including guidance in selecting contractors and architects and in accessing preservation incentives and funding. You can reach Renée Novak, Field Director, at 410-685-2886, x305 or by email at rnovak@presmd.org. Support our Technical Assistance Fund at presmd.org/ecflood.



Thanks to our supporters, 8111-8113 Main Street, badly damaged and in danger of demolition, was stabilized soon after the flood, and now rehabilitation work continues. Pictured left, property owner Jennifer Johnson, with a representative from the Structural Group who did the engineering work with Keast & Hood.

Photo—Patapasco Valley Heritage Greenway

STATE RECOMMENDATIONS · PRESERVATION FUNDING

Joint Chairmen's Report

THE MARYLAND HISTORICAL TRUST (MHT), our state agency for historic preservation, hosts a grant fund with three specific programs: (1) non-capital preservation, (2) capital historic preservation, and (3) the museum assistance grant program.

Despite an established need for these grants throughout the state, all of these programs have gone unfunded since 2012.

ONE OF THE FIRST STEPS along a path to restoring funding is the completion of a Joint Chairmen's Report by MHT to assess the demand for preservation and museum funding in Maryland. Preservation Maryland hopes to see the following recommendations:

- » Restore funding to the MHT Grant Fund as soon as possible
- » Support research and survey needs throughout the state
- » Target state support for threatened and underserved resources
- » Expand access to existing funding programs to include the needs of historic and cultural museums.

PRESERVATION MARYLAND will support implementation of these recommendations and advocate for a total of \$1.5 million from the Governor to support the MHT grant program in fiscal year 2018. To learn more about the report and our advocacy, go to: presmd.org/jcr.



THE BEL-LOC DEBATE

Valuing our Recent Past

Above: THE BEL-LOC DINER has changed little over the past 50 years, save for the addition of a large kitchen and seating constructed toward the back of the property. Otherwise, it looks much like it did on opening day, April 4, 1964.

by Mark Tuminello

Marylanders have an undeniable connection to time spent—and memories made—at the 1960s Bel-Loc Diner.

BY EARLY JUNE, after Starbucks expressed interest in purchasing the diner at its busy intersection in Baltimore County, over 1200 people had already signed Preservation Maryland's online petition in support of reuse, not demolition, of the property.

With the future of the Bel-Loc Diner still uncertain at the time of publishing, we want to take this opportunity to tell the story of not only the building but of the sense of place that the Diner has created for over 50 years. If the Bel-Loc is lost, these stories are all that will remain.

In March of 1963, Thomas Doxanas, one of the "T"s of the popular Double-T Diner regional chain, and John Fangikis leased the property at the northeast corner of East Joppa Road and Loch Raven Boulevard. The original plan was to establish a fourth Double T-Diner, but by October of that year, they

had instead formed a new company, Bel-Loc Diner, Inc. On April 4, 1964, the Bel-Loc Diner opened for business.

DeRaffele Diner Manufacturing Company based in New Rochelle, NY built The Bel-Loc Diner at an

original cost of \$112,544—that included everything from booths and counter-tops to coffee urns and soda fountains. Since the early days of lunch wagons and railroad cars, most diners are prefabricated and built in specialty shops like DeRaffele. At one time there were as many as fourteen other diner manufacturers in New Jersey alone, but now DeRaffele is one of the last.

Diner architecture, like commercial architecture, changes to follow style trends. In the 50s, designers experimented with different materials and shapes—yet most were still reminiscent of the streamlining introduced in the 1930s. In the early 1960s, however, diner designs changed more radically than in perhaps any time in the previous 30 years. They featured overhanging rooflines with recessed lighting called folded plates, which zigzag around the building. The Bel-Loc Diner is the only example of this type of diner remaining in the Baltimore area, which makes saving this building from the bulldozer's blade all the more important.

ABOUT THE AUTHOR Mark Tuminello has a Bachelor's Degree in Mass Communication, and is currently working towards a Master's in Historic Preservation at the University of Maryland. He is a Baltimore City resident and recently enjoyed lunch with his daughters at Bel-Loc Diner.

DIRECT SUPPORT

Heritage Fund Grants

IN FISCAL YEAR 2016, Preservation Maryland has invested \$82,750 in grants in deserving and diverse preservation projects across Maryland. These grants provide one of Maryland's few sources for funding for direct assistance to endangered cultural resources and promotes innovative education projects that can inform best practices. The next deadline for grant applications is February 15, 2017. Find out more at: presmd.org/hf.

EDUCATION & RESEARCH

- C&O CANAL TRUST**
MONTGOMERY COUNTY / Promoting Swains Lockhouse restoration
- COMMUNITY LAW CENTER**
BALTIMORE CITY / Educational program on vacant buildings in historic neighborhoods
- COALITION TO PROTECT MARYLAND BURIAL SITES, INC.**
STATEWIDE / New website and online resources
- HOSANNA COMMUNITY HOUSE, INC.**
HARFORD COUNTY / Sesquicentennial of the County's Freedmen's Bureau schools
- REGINALD F. LEWIS MUSEUM**
BALTIMORE CITY / Assessment and digitization of Mutual Benefits Society register
- ST. MARY'S COLLEGE FOUNDATION**
ST. MARY'S COUNTY / Cremona Mansion collections curation and National Register nomination preparation

PLANNING & FEASIBILITY

- ACCOHANNOCK INDIAN TRIBE**
SOMERSET COUNTY / Collection planning and preservation
- GLENN DALE CITIZENS' ASSOCIATION**
PRINCE GEORGE'S COUNTY / Glenn Dale Hospital reuse community outreach

- HISTORICAL SOCIETY OF CHARLES COUNTY**
CHARLES COUNTY / Interpretation at Rich Hill historic site
- PLEASANT VIEW HISTORIC ASSOCIATION**
MONTGOMERY COUNTY / Strategic Plan for Quince Orchard area
- QUEEN ANNE'S COUNTY HISTORICAL SOCIETY**
QUEEN ANNE'S COUNTY / Burrisville Mt. Zion ME Church documentation and planning
- TOWN OF ELKTON**
CECIL COUNTY / Community planning charrette for reuse of Holly Hall

REPAIR & REHAB

- ACCOKEEK FOUNDATION**
PRINCE GEORGE'S COUNTY / Rehabilitation of historic tobacco barn
- DORCHESTER COUNTY COUNCIL**
CAMBRIDGE, DORCHESTER COUNTY / Emergency stabilization of the Hearn Building
- ST. JOHN'S EPISCOPAL CHURCH**
HARFORD COUNTY / Repair of historic belfry
- TOWN OF BROOKVILLE**
MONTGOMERY COUNTY / Installation of town entrance signs
- WEST END CITIZENS ASSOCIATION**
DORCHESTER COUNTY / Rehabilitation of the Wallace Office Building
- ZION CHURCH OF THE CITY OF BALTIMORE**
BALTIMORE CITY / Restoration of the Meeting Hall interior



Above: The Bel-Loc's iconic "folded plate" roofline is the only example of this design style that remains in the Baltimore area.



LET US GIVE YOUR BUILDINGS ANOTHER CHANCE TO PERFORM.

Encore

SUSTAINABLE DESIGN
ARCHITECTURE | PRESERVATION

ARCHITECTURE • PRESERVATION • SUSTAINABLE DESIGN
HISTORIC TAX CREDITS • LEED DOCUMENTATION

Woman- and Minority-Owned Business • Offices near Annapolis and in Easton MD
(301) 965.0096 • Hello@EncoreSDesign.com

indow

IT'S SIMPLE. WINDOW INSERTS THAT FIT INSIDE YOUR WINDOW FRAMES WITH NO MOUNTING BRACKETS.

Keep the comfort inside.

SuperGreen Solutions
Energy Efficient Products

indowwindows.com | 410.465.4276

Upcoming Events

There's so much to do on the Eastern Shore! Our list of events should give you a reason to cross the Bay all the year through. Many more events across Maryland at: presmd.org/events.

OCT 29-30 **REVOLUTIONARY WAR & COLONIAL FESTIVAL** Living history, colonial marketplace, manor house tours and more at Mount Harmon Plantation in Cecil County. More at: mountharmon.org

NOV 11-13 **WATERFOWL FESTIVAL** Nearly 20,000 people attend this annual festival in Easton that promotes natural conservation, promotes wildlife art, and showcases the Eastern Shore. More at: waterfowlfestival.org

NOV 17-JAN 1 **WINTERFEST OF LIGHTS** Ocean City sparkles with more than 1 million holidays lights up and down the boardwalk with warming spots and activities for all ages. More at: ococean.com

DEC 4 **CHRISTMAS TIME OF THE BARREN CREEK VILLAGE** Includes a shuttle tour of several historic sites in Wicomico County with music, vendors, crafts and food along the way. More at: adkinsmuseum.org



PRESERVATION MARYLAND
3600 Clipper Mill Road · Suite 248
Baltimore, Maryland 21211

NON-PROFIT
U.S. POSTAGE
PAID
BALTIMORE MD
PERMIT NO.
1262

INSIDE: JUST REVEALED!

The year's important and threatened sites on Preservation Maryland's upcoming Six-to-Fix roster.

REAL PRESERVATION IN ACTION

OPEN IMMEDIATELY



DRONE SCANS OF WHITES HALL

New Technology for the Preservation Toolbox

21ST-CENTURY DRONE COLLECTS DIGITAL IMAGES OF 18TH-CENTURY HOME



IN AN EFFORT TO HELP DOCUMENT and market Whites Hall, Johns Hopkins' boyhood home, Preservation Maryland has teamed up with Elevated Element, a full-service commercial drone operator to use photogrammetry to stitch together thousands of 2D images into a digital 3D fly-through.

THE 18TH-CENTURY HOME and surrounding thirteen acres are for sale for \$700,000 by current owners, the Polm Company. The drone and laser scans were completed in mid-July and featured in *The Baltimore Sun*. You can now buy a 3D model of the house! Learn more at: presmd.org/hopkinsdrone.

